

# EMPURON VISUAL

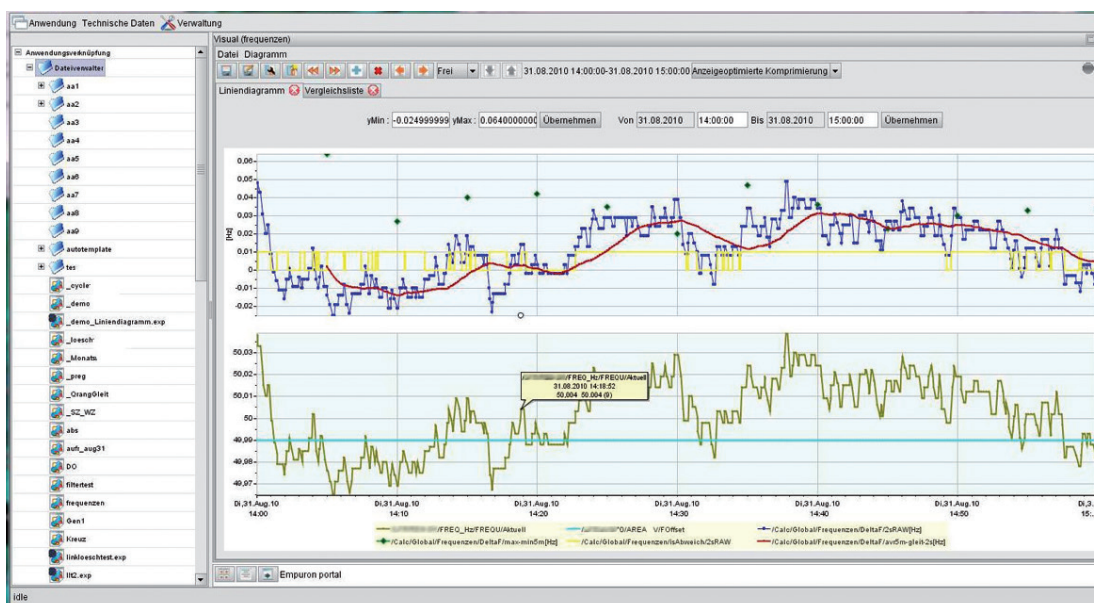
## The Reporting Portal for Integration and Analysis

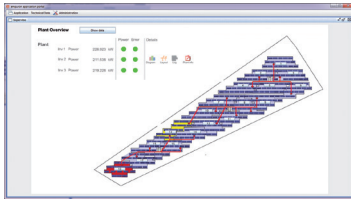
Access information of different systems and data bases at any workstation in the back office – **EMPURON VISUAL** is a tool for a system-independent visualization and evaluation of messages, values and states of legacy systems, in distributed infrastructures (control systems, automation systems, ...) and in databases (archive, Data-Warehouses, ...). Standard workplace is e. g. a PC, connected to the Internet or Intranet.

A clear, diagram-based representation of the information allows a fast evaluation of most diverse data constellations. Data security and protection of privacy are ensured by professional safeguard mechanisms.

- The "Union Single Interface System" affords an integration of miscellaneous data sources within a report or an evaluation in a homogeneous web interface.
- Automation of the evaluations with integrated tools for the formats PDF, Excel, HTML et al.
- The access to data is secured by data filters. Datasets must be released for the access explicitly.

### A view on the Multiple Document Interface ("MDI") with Toolbars incorporated:

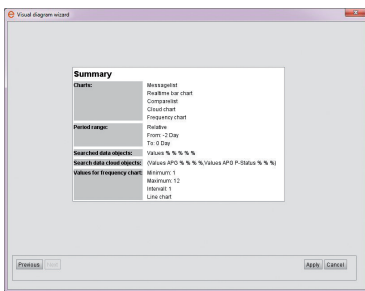




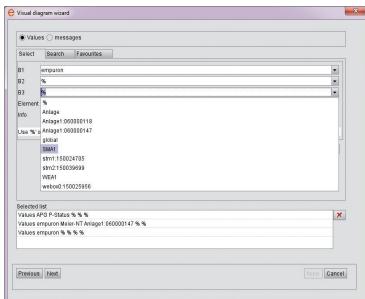
User Interfaces, based on SVG, with predefined, dynamic analysis

### Important system functions in the overview

- Synchronization of diagrams and lists, when Zooming in charts
- Adjusted zooming and scrolling according to defined time periods (day, week, month, year)
- Comfort in synchronization of the diagrams in different windows
- Different representational variants for messages and status information with text filter control
- Presentation of values and status information in a diagram ( "Combined Chart" with several scales and labels).
- Access to values and status information in the real time database and in archives
- Integration of several databases, subsystems or control systems in one portal
- Ability to clientele processing by allocation of groups and individual persons to org. units with suitable data filtering
- User roles with assigned evaluation functions; The assignment of the roles and data filters takes place in the administrator dialogue and is at any time alterable by authorized users;
- Integration of most different file formats into the "user profile" (directory of evaluations) and display in the user interface of **EMPURON VISUAL** History function for "old evaluations"
- Print function, generation of diagrams and tables in the PDF format
- Black board for the exchange of evaluations and documents between the users
- Produce and exchange graphic and tabular snapshots
- Comfortable creation and administration "web links" for the export of information
- Transfer of "web links" alternatively into the formats CSV, PDF or HTML and/or into diagram formats
- Various possibilities of the Excel export. Each tabular information can be exported into Excel by pressing a button, independently whether values or messages are represented. "Web links" permit the multiple integration into a Excel file - every "web link" represents an own access to Excel also including automatic adjustment of the time borders, in accordance with the evaluation presettings.
- Extensive additional functions and modules, integration with the help of JBoss middleware components
- Full Graphic Report Designer with integration of the generated Reports into the **EMPURON VISUAL PORTAL** (administration dialogue)
- Possibility of integration into existing reporting systems (e. g. Crystal Reports)



Wizard for creating evaluations or web links



Dialogue for selecting data objects

**EMPURON VISUAL** is a time-saving aid for routine or ad hoc evaluations, which systematically supplies information to departments or service teams. The Internet able user interface is ideal for an information transfer over larger distances.